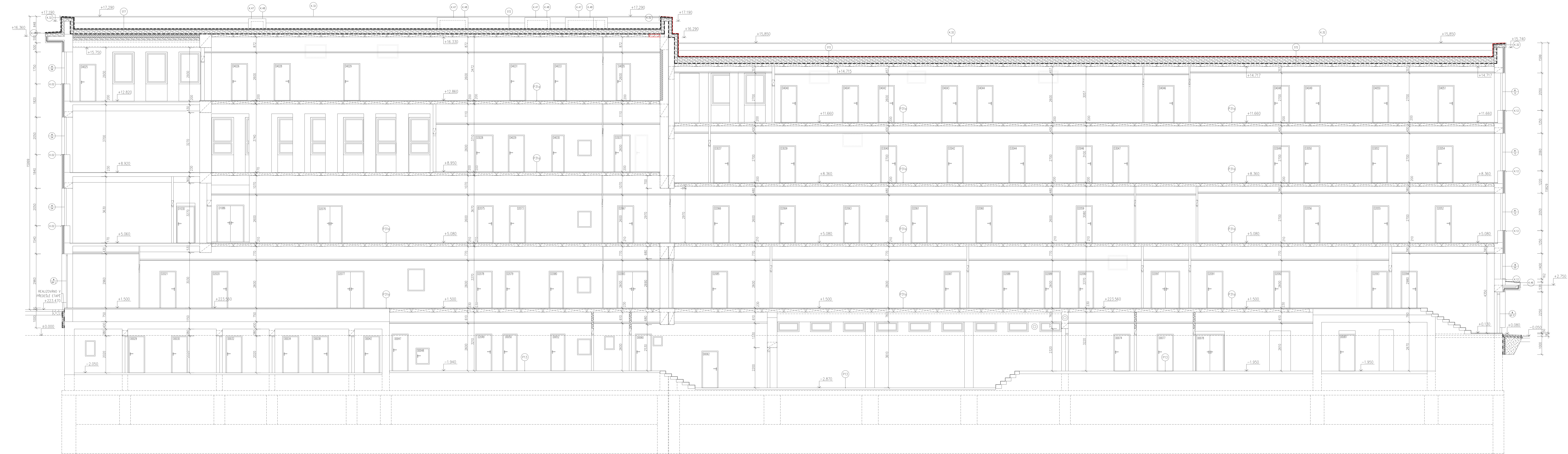
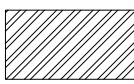
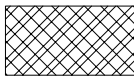
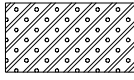
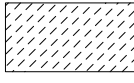
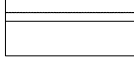
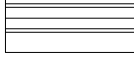




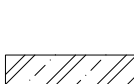

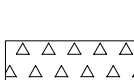
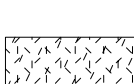

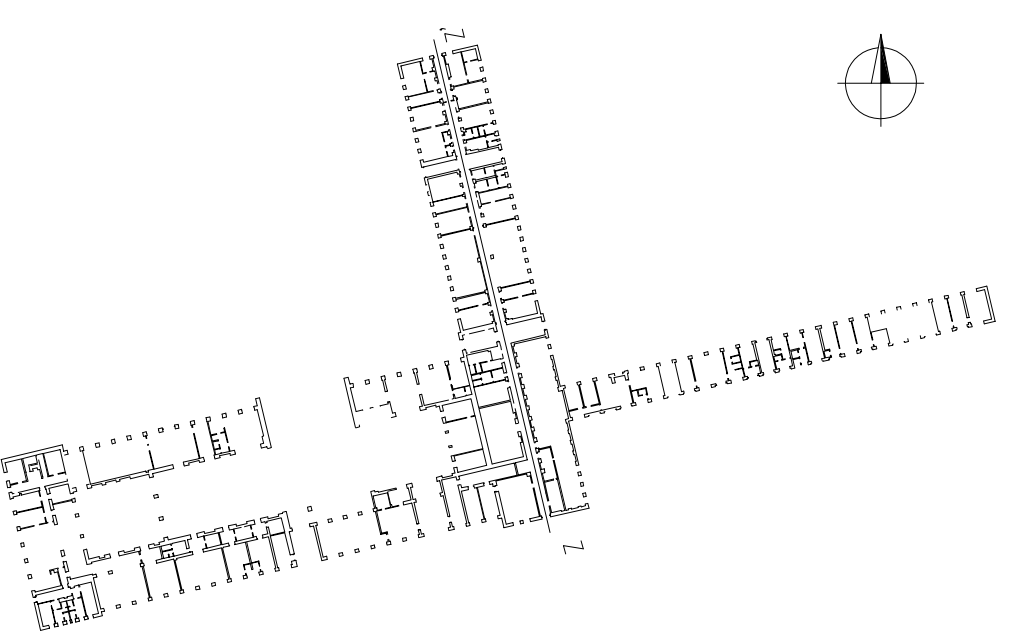


ŘEZ Z-Z



- ### LEGENDA - NÁVRH:
- | | |
|---|--|
|  | Dozdivka z plných cihel |
|  | Zdivo z keramických dutinových tvárnic tl. 140 mm |
|  | Porobetonové tvárnice, tl. 50, 100, 150, 200 mm |
|  | Bednicí tvárnice, Best - 200 |
|  | Keramický obklad do výšky 2 m, popř. výšky parapetů (u oken) |
|  | Sádkartonová stěna tl. 100 mm |
|  | Prostup stěnou |
|  | Extrudovaný polystyrén |
|  | Izolační fasádní deska (čedičová vlna - kolmá vlákna) |
|  | Cementová litá pěna s polystyrénem |
|  | Cementový litý potěr |
|  | Železobeton |
|  | Profilované HDPE desky |
|  | Akustická kročejová izolace |
|  | Štěrkopiskový podsyp |

[illegible]